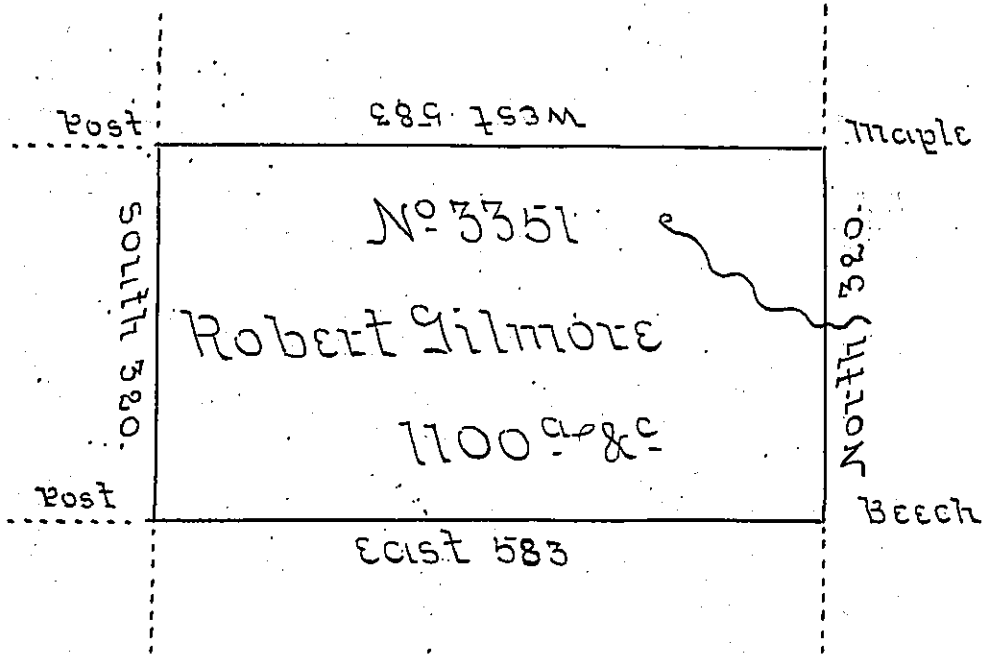


No 3352

No 3362.



No 3350.

In pursuance of a Warrant No 3351 dated 14<sup>th</sup> December 1792 Surveyed 7<sup>th</sup> day of Sept<sup>r</sup> 1793 to Robert Gilmore the above described Tract of Land Situate of the Waters of Sandy Lick Creek *adjoining* his other land in the late purchase, District No 6. Containing Eleven hundred Acres, & the allowance of Six Percent &c

Emmon Williams Dep<sup>y</sup>. SE

No Dan<sup>l</sup> Brodhead Esq<sup>r</sup> }  
 Surveyor General }

IN TESTIMONY that the above is a copy of the original remaining on file in the Department of Internal Affairs of Pennsylvania, made conformably to an Act of Assembly approved the 16th day of February, 1833, I have hereunto set my Hand and caused the Seal of said Department to be affixed at Harrisburg, this sixteenth day of January 1905.

*George P. Perry*  
 Secretary of Internal Affairs.